

Materials for Press Conference
Aug. 11, 2009

Polycrystalline Silicon Project in Malaysia

Tokuyama Corporation

Production Capacity	6,000 tons/ year
Production Method	Siemens method
Target Usage	Solar cells
Construction Plan	Commence construction early in 2011 Start operations in spring 2013
Main Construction Company	Chiyoda Corporation
Construction Costs	Approx. ¥65 billion
Administration	Establishment of and administration by wholly owned subsidiary in Malaysia (Tokuyama Malaysia Sdn. Bhd.)



Company Name	Tokuyama Malaysia Sdn. Bhd.
Establishment	August 2009
Location of Headquarters	Kuching (capital of the Malaysian state of Sarawak)
Capital	TBD (Tokuyama: 100% [tentative])
Representative	TBD

**Number of
Employees**

Approx. 300 people at the time of start-up of operations,
about 280 of whom will be hired locally

Time of Hiring

In 2010: Start hiring for certain positions
In 2012: Start hiring for all other positions

**Education and
Training**

Education and training for 6 months to 2 years at
Tokuyama Factory for key persons in manufacturing
process

Commencement of
Sales

Summer 2013

Sales Scope

Plan to sell to the global market, including new and existing customers

Net Sales

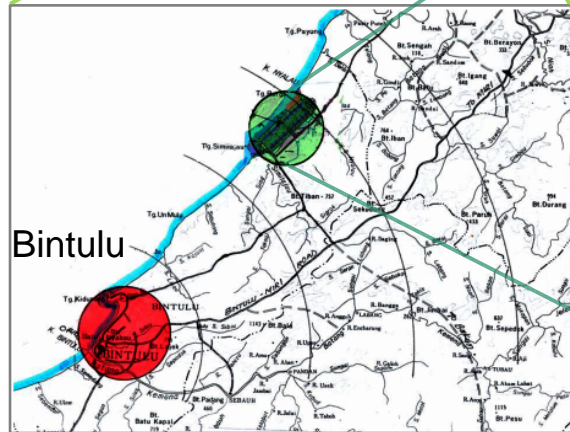
Approx. ¥35 billion



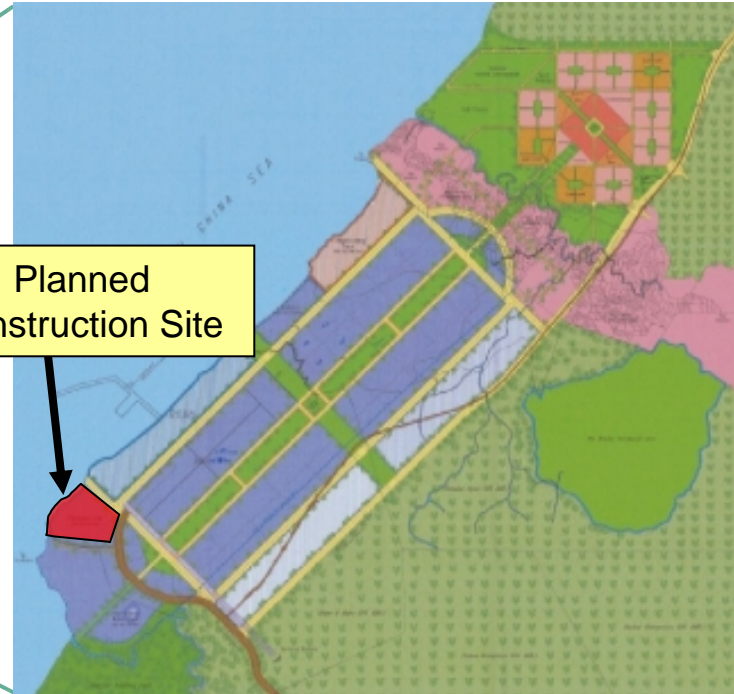
Samalaju Industrial Park: (1) Location



Samalaju Industrial Park



Planned Construction Site



Plan to secure approx. 200 hectare site for second manufacturing base at Samalaju Industrial Park (located 50 km northeast of Bintulu)

Ease of Securing Needed Resources

- Abundant supply of electricity (hydropower)
- Industrial water
- Highly educated workers



Bakun Dam

Preferential Treatment by Federal and State Government

- Preferential tax treatment
- Support for acquisition of permits and licenses



Press Conference in Kuala Lumpur, Nov. 2008



Land

Land development to start this summer

Electricity
(power plant)

Bakun Dam: To be completed in 2010 according to plan and start supplying power in 2012
→ Not expected to interfere with factory construction and trial operation

Roads

Already constructed

Seaport

Bintulu Port
(to use Samalaju Port once it is constructed)

Planned construction site of
Samalaju Industrial Park



Centennial Vision

Numerical Targets

- **Net Sales: ¥500 billion or more**
- **The ratio of operating income to net sales: 15% or higher**
- **Overseas sales ratio: 30% or higher** (FY2017)

Basic Strategies

- **Strengthening of Strategically Growing Businesses**
- **Strengthening of International Competitiveness**

* Tokuyama will celebrate its centennial on Feb. 16, 2018

Position of Polycrystalline Silicon Business

- **Core part of Strategically Growing Businesses**
- **Main driver of achievement of numerical targets**



- Expand business through active investment
- Enhance competitiveness in quality, cost, and stable supply
- Establish vapor to liquid deposition (VLD) method as technology and consider commercial production using VLD method
- Maintain presence in polycrystalline silicon industry (over 10% share of world market)



3,000 ton plant started commercial operations in April 2009 (Tokuyama Factory's Higashi Plant)

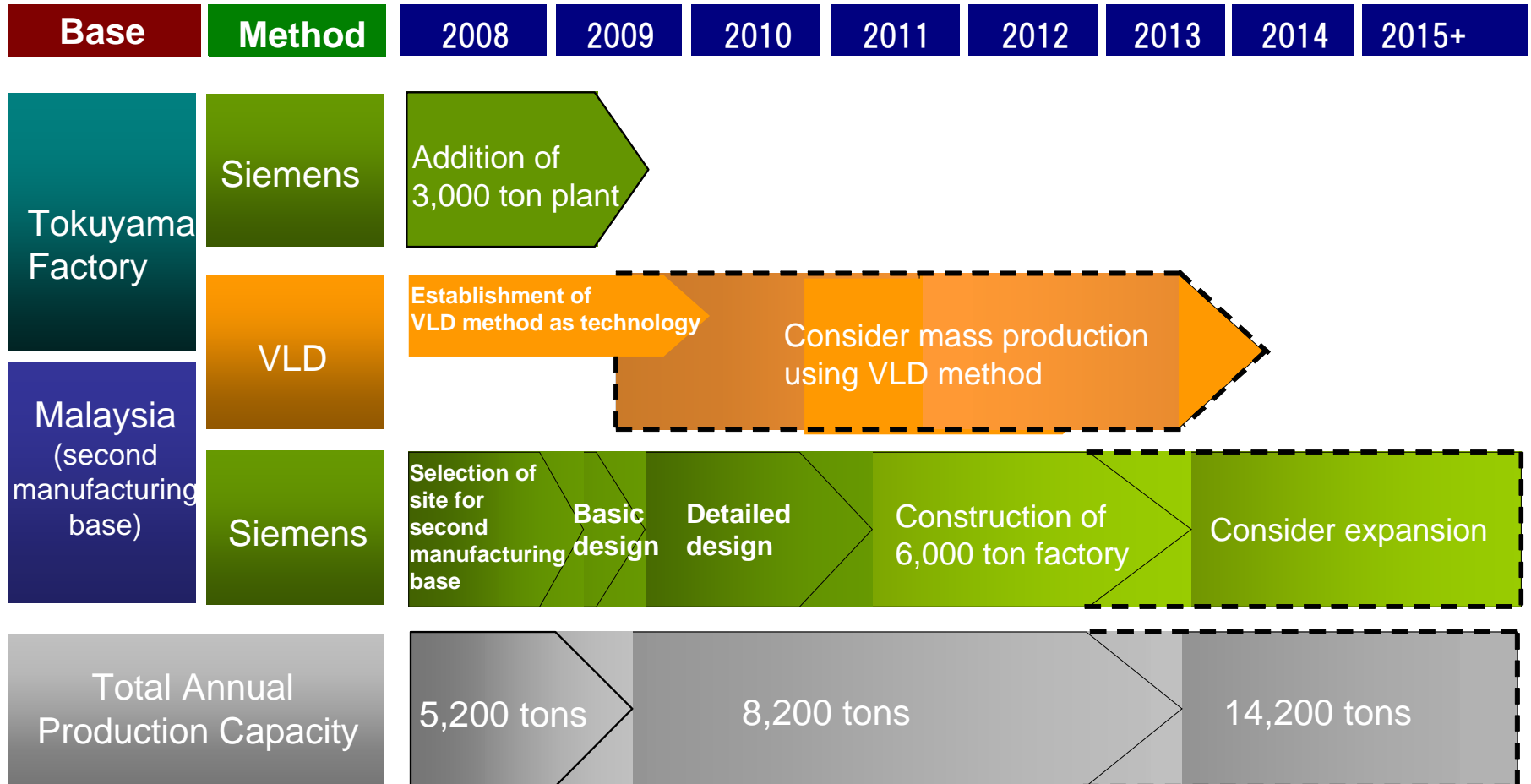


Verification plant for VLD method (Tokuyama Factory's Higashi Plant)



Timeline for Polycrystalline Silicon Business

(CY)





Chemistry with a heart

TOKUYAMA

